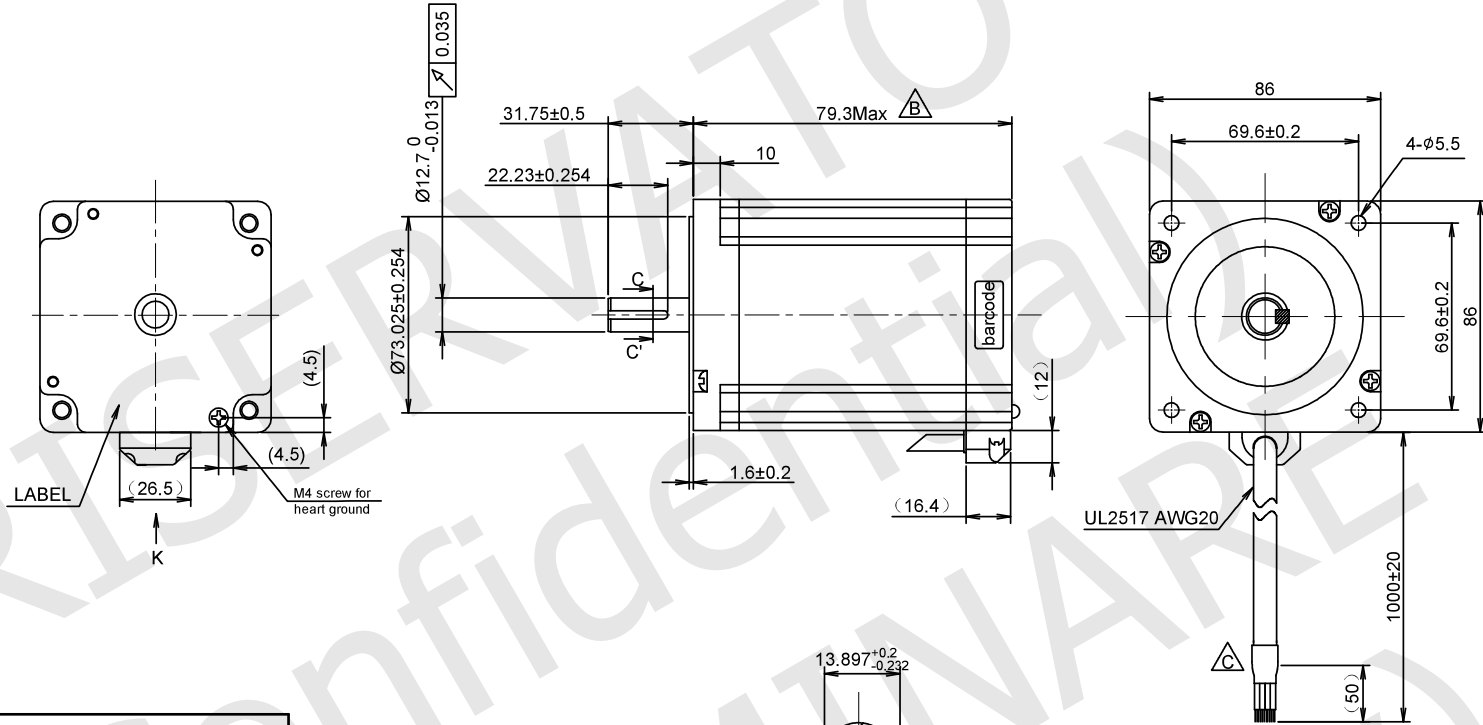
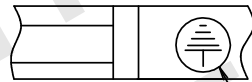


RoHS



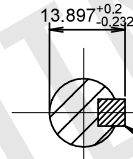
MOTOR SPECIFICATIONS

STEP ANGLE	1.8° ±5%
RATED CURRENT	6.00 Amps/Ph
HOLDING TORQUE	5.36 Nm Min.
RESISTANCE	0.40 ohm ±0.1 ar 25°C
INDUCTANCE Δ	3.30 mH ±20% at 1kHz, 1Vrms
ROTOR INERTIA	1878 g.cm ²
INSULATION CLASS	Class B, 130°C
DIELECTRIC STRENGTH	500 Vac 1 minute
IP CODE	IP20
PULL OUT TORQUE	---
BACK EMF	---
DETENT TORQUE	---
WEIGHT	2300 g. approx
TEMPERATURE RISE	80K Max.
OPERATION AMBIENT	-20°C ~ +50°C
STORAGE AMBIENT	-20°C ~ +70°C
SHAFT AXIAL LOAD	60 N
SHAFT RADIAL LOAD	220 N (ON FRONT SHAFT END)



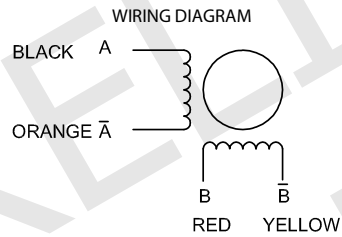
K VIEW

GROUND LABEL



C-C' VIEW

Key: 3.175*3.175*22.23



WIRING DIAGRAM

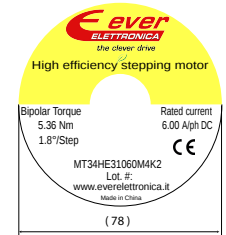
EXCITING SEQUENCE (TWO PHASES) VS. DIRECTION OF ROTATION

STEP	A	B	Ā	B̄
1	+	+	-	-
2	-	+	+	-
3	-	-	+	+
4	+	-	-	+

CLOCK WISE VIEW FROM MOUNTING SIDE

LABELS

YYWWXXXXX (25 x 8)
Stator barcode label



UNIT: mm
UNLESS OTHERWISE SPECIFIED TOLERANCES
DIMENSIONS : ±0.3 mm DEGREES : ±5%

DESIGN	Stm01658-00c
CHECK	
APPROVED	
DATE	17 / 11 / 2021

MT34HE31060M4K2
STEPPING MOTOR SPECIFICATION

REV

- 00a - First release.
- 00b - Fixed inductance and motor length as the actual motor.
- 00c - Add a heat shrink tube on lead wires.



www.everelettronica.it