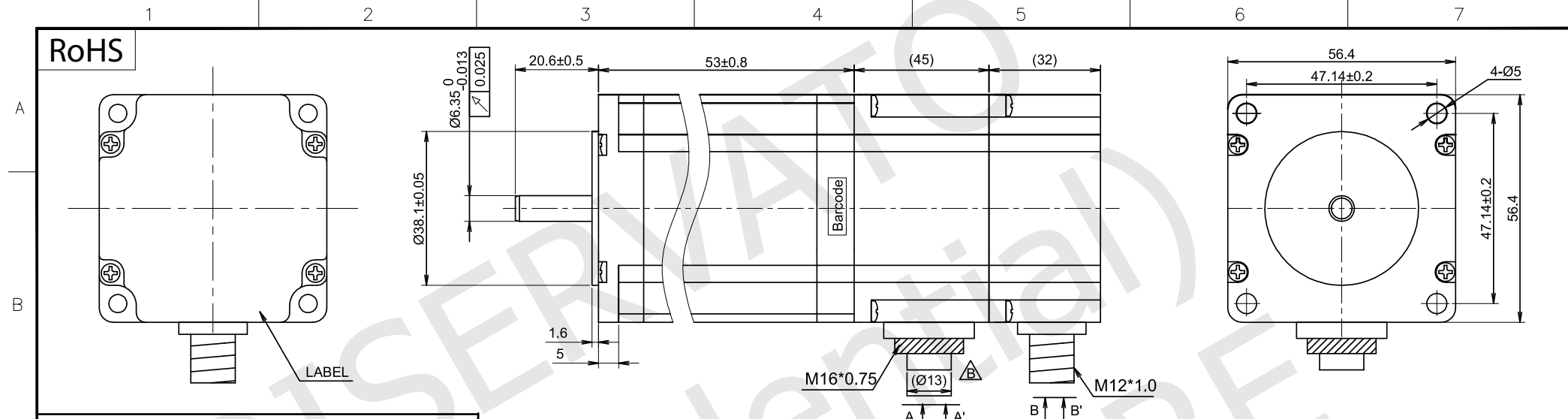


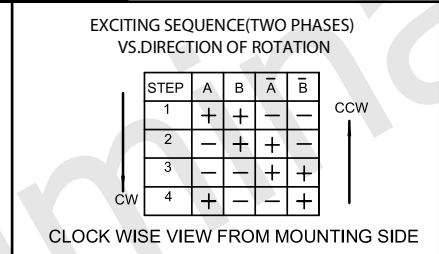
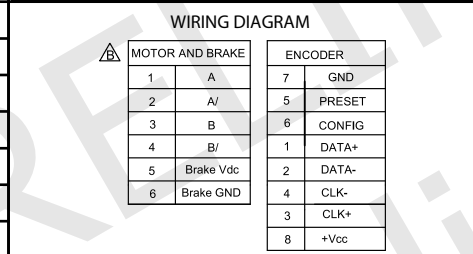
RoHS



ENCODER SPECIFICATIONS	
ENCODER TYPE	Absolute encoder
POWER SUPPLY	5.00 Vdc
SINGLE TURN RESOLUTION	16 bits
MULTI TURN RESOLUTION	17 bits
OUTPUT TYPE	BISS-C

MOTOR SPECIFICATIONS	
STEP ANGLE	1.8° ±5%
RATED CURRENT	5.00 Amps/Ph
HOLDING TORQUE	0.80 Nm Min.
RESISTANCE	0.15 ohm ±0.1 at 25°C
INDUCTANCE	0.50 mH ±20% at 1kHz, 1 Vrms
ROTOR INERTIA	290 g.cm ²
INSULATION CLASS	Class B, 130°C
DIELECTRIC STRENGTH	500 Vac 1 minute

BRAKE SPECIFICATIONS	
VOLTAGE	24 Vdc
POWER	7.6W
STATIC TORQUE	1.3N. m min



LABELS

YYWWXXXXX (25 x 8)
Stator barcode label

BACK EMF	---
DETENT TORQUE	---
WEIGHT	900 g. approx
TEMPERATURE RISE	80K Max.
OPERATING TEMPERATURE	-20°C ~ +50°C
STORAGE TEMPERATURE	-20°C ~ +70°C
SHAFT AXIAL LOAD	15 N
SHAFT RADIAL LOAD	75 N (ON FRONT SHAFT END)

UNIT: mm

UNLESS OTHERWISE SPECIFIED TOLERANCES

DIMENSIONS : ±0.3 mm DEGREES : ±5%

DRAWING NOT TO SCALE

REV

DESIGN	Stm01929-01b
CHECK	
APPROVED	
DATE	18 / 05 / 2020
	00a - First release.
	00b - Replaced the motor connector type.
	01b - Changed the label type.

MT23HE22050H40C
STEPPING MOTOR SPECIFICATION