

RoHS

A

B

C

D

E

1

2

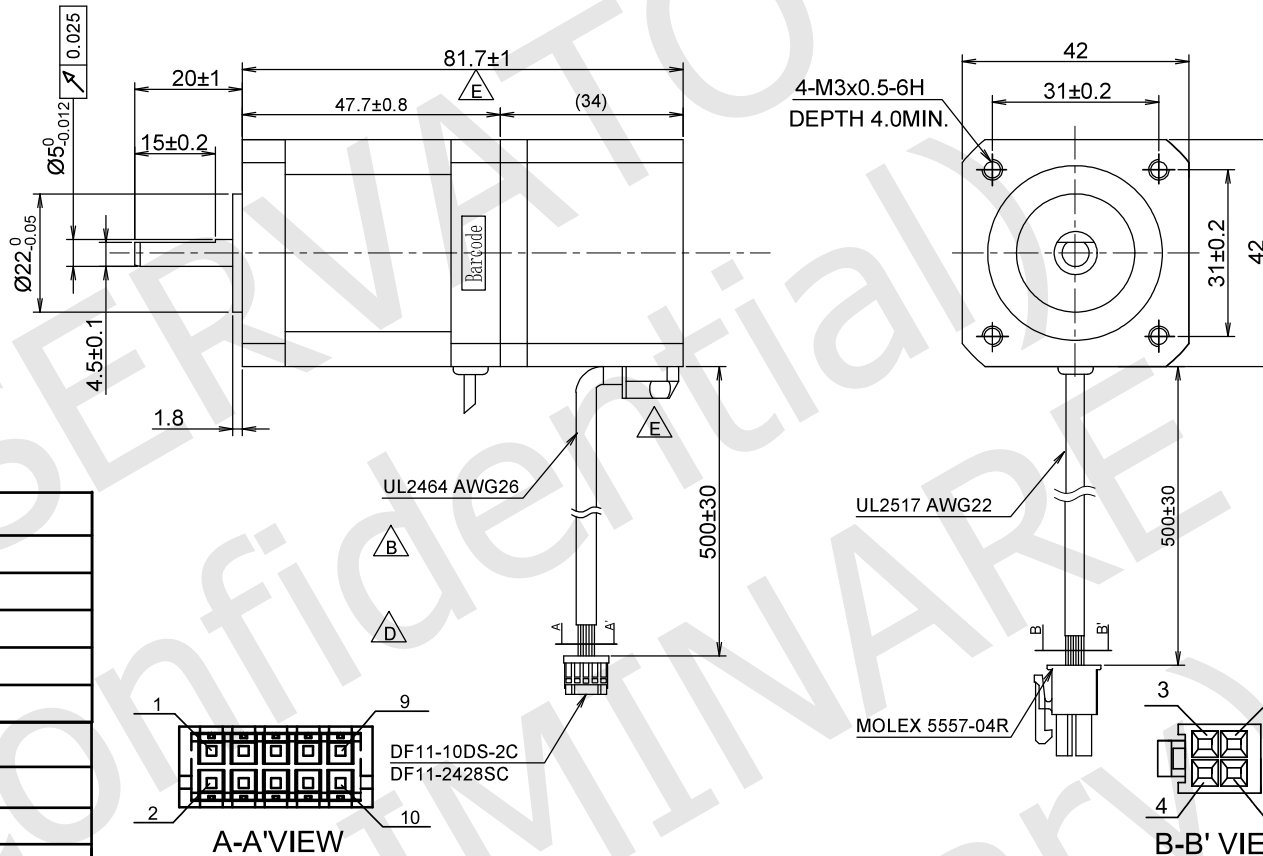
3

4

5

6

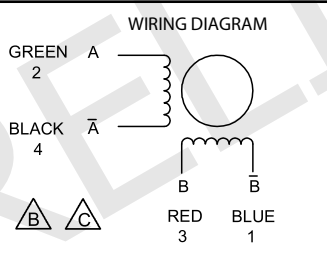
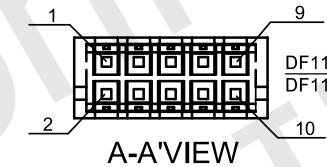
7



| ENCODER SPECIFICATIONS | |
|---------------------------------|--------------------|
| ENCODER TYPE | Absolute multiturn |
| POWER SUPPLY | 5.00 Vdc |
| SINGLE TURN RESOLUTION Δ | 17 bits |
| MULTI TURN RESOLUTION Δ | 16 bits |
| OUTPUT TYPE | BISS-C |

| MOTOR SPECIFICATIONS | |
|----------------------|-----------------------|
| STEP ANGLE | 1.8° ±5% |
| RATED CURRENT | 2.00 Amps/Ph |
| HOLDING TORQUE | 0.48 Nm Min. |
| RESISTANCE | 1.35 ohm ±10% at 25°C |
| INDUCTANCE | 2.80 mH ±20% |
| ROTOR INERTIA | 77 g.cm ² |
| INSULATION CLASS | Class B, 130°C |
| DIELECTRIC STRENGTH | 500 Vac 1 minute |

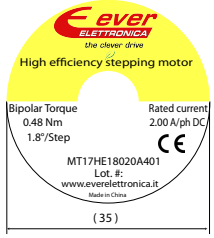
| | |
|-----------------------|---------------------------|
| IP CODE Δ | IP40 |
| PULL OUT TORQUE | --- |
| BACK EMF | --- |
| DETENT TORQUE | --- |
| WEIGHT | 360 g. approx |
| TEMPERATURE RISE | 80K Max. |
| OPERATING TEMPERATURE | -20°C ~ +50°C |
| STORAGE TEMPERATURE | -20°C ~ +70°C |
| SHAFT AXIAL LOAD | 10 N |
| SHAFT RADIAL LOAD | 21 N (ON FRONT SHAFT END) |



| ENCODER | | |
|---------|--------|-----|
| 1 | SHIELD | --- |
| 2 | - | - |
| 3 | CONFIG | GRY |
| 4 | PRESET | ORG |
| 5 | DATA+ | GRN |
| 6 | DATA- | YEL |
| 7 | CLK+ | BRN |
| 8 | CLK- | WHT |
| 9 | 5Vdc | RED |
| 10 | GND | BLU |

| EXCITING SEQUENCE(TWO PHASES) VS.DIRECTION OF ROTATION | | | | | | |
|---|------|---|---|-----------|-----------|-----|
| | Step | A | B | \bar{A} | \bar{B} | |
| CLOCK WISE VIEW FROM MOUNTING SIDE | 1 | + | + | - | - | CCW |
| | 2 | - | + | + | - | CW |
| | 3 | - | - | + | + | |
| | 4 | + | - | - | + | |

| LABELS | |
|----------------------|----------|
| YYWWXXXXX | (25 x 8) |
| Stator barcode label | |



UNIT: mm
 UNLESS OTHERWISE SPECIFIED TOLERANCES
 DIMENSIONS : ±0.3mm DEGREES : ±5%

| | |
|----------|----------------|
| DESIGN | Stm01839-01f |
| CHECK | |
| APPROVED | |
| DATE | 09 / 11 / 2022 |

MT17HE18020A401
 STEPPING MOTOR SPECIFICATION

| REV | DESCRIPTION |
|-----|--|
| 00a | - First release. |
| 00b | - Modified the wiring diagram and connection of motor and encoder. |
| 00c | - Modified the wiring diagram and connection of motor and encoder. |
| 01c | - Added the encoder connector code. |
| 01d | - Fixed the absolute encoder resolution. |
| 01e | - Changed the rear cover and lead wires output. |
| 01f | - Correct the encoder leadwires colours. |